

# Digital Light Dimmer Cabinet

**Quadrant** is proud to present our ultimate Dimmer System.

*This equipment has been designed to give the best answer to the most demanding applications on Theatres and TV Studios.*

*After several years, dealing with end user demands, we've had one more time, successfully overpassed the challenge of new requirements.*

*For that reason we have projected a system with as much specifications and electrical safety devices as you can ask for.*

*Even for twelve channel units, our engineers have achieved a solution, not only simple to install, but also for an easy assistance due to the ZERO CABLE drawer type units used on those rack cabinets.*

*To prevent from those well known DMX problems when a dimmer is removed from the installation, we have inserted a Opto-Insulated DMX Splitter on the equipment.*

*The costumer can define either the number of channels per cabinet (up to 96 channels) or his output power: a mixed combination of 3.6KW (multiples of 12) or 5.7KW (multiples of 6) is possible on the same cabinet.*

*The system is so versatile that 12 channel 3.6KW dimmers can be substituted by 6 channels 5,7KW ones (with inherent channel coupling in parallel).*

*All channels are protected by Magnetic Circuit Breakers (MCB's).*

*The dimmer units (with 12 or 6 channels) are individually protected by one 63Amp. RCD ( I = 30mA).*

*Each cabinet is provided with three panel lamps (one per phase with individual fuse) to warn or inform that mains is on.*

*One protected (16 Amp.) outlet shuko is on the front panel for technical assistance purposes.*

*The cables (supply and outputs) can enter the cabinet either from top, bottom or back side.*

*The technician doesn't need to have "child hands" cause inside the cabinet we have enough room to work. This room is also essential for a proper ventilation.*

*On standard version, all output connections are Hard-Wire (6mm or 10mm DIN Rail Terminal Blocks, depending on channel output power) but there are other possibilities like Harting or Socapex type connectors.*

*Finally, the cabinet is provided with a well dimensioned 500 Amperes Power Bars and enough space to curve the Main cables.*

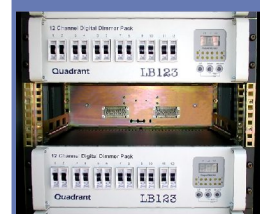
*Dimentions: 700x800x1980 mm*

This equipment complies with CE requirements.

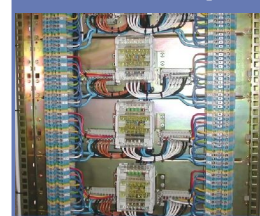
Made by: **Leid Ida**. Rua do Município, 9 - 7490-243 MORA Telf.:+351.266 403 597 Fax.:+351.266 403 461  
www.leid-portugal.com e.mail: produto@leid-portugal.com



**Drawer Type Units**



**Hard-Wire Outputs**



**500 Amp. Power Bars**



**Quadrant**